

Powered by
UNI-SOLAR[®]



About **UNI-SOLAR**[®]

United Solar, a wholly owned subsidiary of Energy Conversion Devices, is the leader in lightweight, flexible, building-integrated PV (BIPV) solutions. The company manufactures, sells and installs thin-film solar laminates that convert sunlight to energy using proprietary technology developed through 30 years of research. Our **UNI-SOLAR**[®] brand laminates are unique because of their flexibility, lightweight, ease of installation, durability and real-world efficiency.



UNI-SOLAR laminates are the only flexible photovoltaic product commercially available and are well-suited for large commercial, industrial and public buildings, such as warehouses, distribution centers, expo centers, schools, hospitals, airports, etc. The result is a durable, easily installed solution for the rooftop generation of clean, renewable energy.

.....
“United Solar has been the unquestioned leader in their field and one of the few PV companies in the world that can offer a true building integrated photovoltaic product.”

— *Dr. Ryne Raffaele, Director of the National Center for Photovoltaics at the National Renewable Energy Laboratory (NREL)*

.....

United Solar has been awarded nearly 70 United States patents for various technological advancements.



For more information, please contact us at <http://www.uni-solar.com/contact-us/>

United Solar is the world's largest producer of flexible solar panels that are lightweight, durable and provide more total energy production than any other solar laminate on the planet. Our mission is to be the leading provider of integrated solar-based solutions that reduce our customers' energy costs and carbon emissions. Below are our commercial and residential solar solutions.

Commercial Solutions

PowerBond ePVL



Rated Power: 144, 136, 68 Wp

- PowerBond ePVL outperforms the competition because of its low light, high heat and shadow tolerant performance.
- By reducing the inactive area on the product, we've reduced the overall dimensions, improved the module efficiency and enabled higher packing density, resulting in lower installed costs and the fastest payback.
- Quite simply, it's easier to install. We've integrated the strain relief into our terminal housing, eliminating an installation step, and upgraded to interlocking connectors for simplified connections.
- With no substructure, PowerBond ePVL is the lightest product on the market and can be directly applied or integrated into a new or existing roof.
- PowerBond ePVL has angled corners which reduces bonding stresses and wrapped weather-proofing edges making the product stronger and more durable. And, the diodes are flush to the laminate, improving upon the already lowest profile product commercially available.
- PowerBond ePVL installs without roof penetrations, and the peel and stick release paper now extends beyond the laminate, making a simple process even simpler.
- The new product container shape enhances the strength of the box, increases shipping options and reduces shipping costs.

PowerBond PVL



Rated Power: 144, 136, 68 Wp

- PowerBond PVL upholds the aesthetic integrity of various roofs by fitting the contours of the roofing surface and seamlessly blends into the environment.
- PowerBond PVL can be directly applied or integrated into a new or existing roof for ease of installation.
- PowerBond PVL's peel and stick adhesive requires no roof penetrations and lower balance-of-system costs.
- The fully integrated photovoltaic laminate requires no electrical grounding.

PowerTilt



Rated Power: 144, 136, 68 Wp

- At 2.1 lbs. per square foot unballasted, PowerTilt is ideal for low-load bearing roofs.
- With a fixed 15 degree angle tilt, PowerTilt increases kWh/kWp performance, improving project economics.
- PowerTilt can be installed without costly structural roof reinforcements.
- PowerTilt's higher energy yield and integrated rack results in cost reductions per watt-peak and reductions in the balance-of-system costs.
- PowerTilt is easy to remove and stack for re-roofing.
- Roof attachments for PowerTilt are available in various non-penetrating attachment mechanisms.

PowerMembrane



Rated Power: 144, 136, 68 Wp

- PowerMembrane can be removed from the original roof without damage, allowing repairs or replacement without roof penetrations.
- PowerMembrane requires no racking, which allows for lower balance-of-system costs, lowering overall installation cost.

PowerPlate



Rated Power: 288 Wp

- PowerPlate is lightweight, which is ideal for low load-bearing roofs and does not require further structural roof reinforcements.
- With PowerPlate's integrated racking system the balance-of-system costs are lower, which reduces the overall installation costs.
- The easy to remove and stack system, allows for easy roof repair or replacement.
- PowerPlate's roof attachments are available in various non-penetrating mechanisms, allowing for easy installation on various roof types.

Residential Solutions

PowerShingle



Rated Power: 25, 12.5 Wp

- PowerShingle is lightweight and flexible, with the look and feel of traditional asphalt shingles.
- PowerShingle's roof-friendly application allows homeowners to choose between roof penetration or non-roof penetration applications.
- PowerShingle's environmentally protected connectors snap together and are self-aligning, which reduces installation labor and improves product reliability.
- Special activating connectors for each string allow the modules to be electrically inactive during installation.
- True BIPV, replacing asphalt shingles.

EnerGen

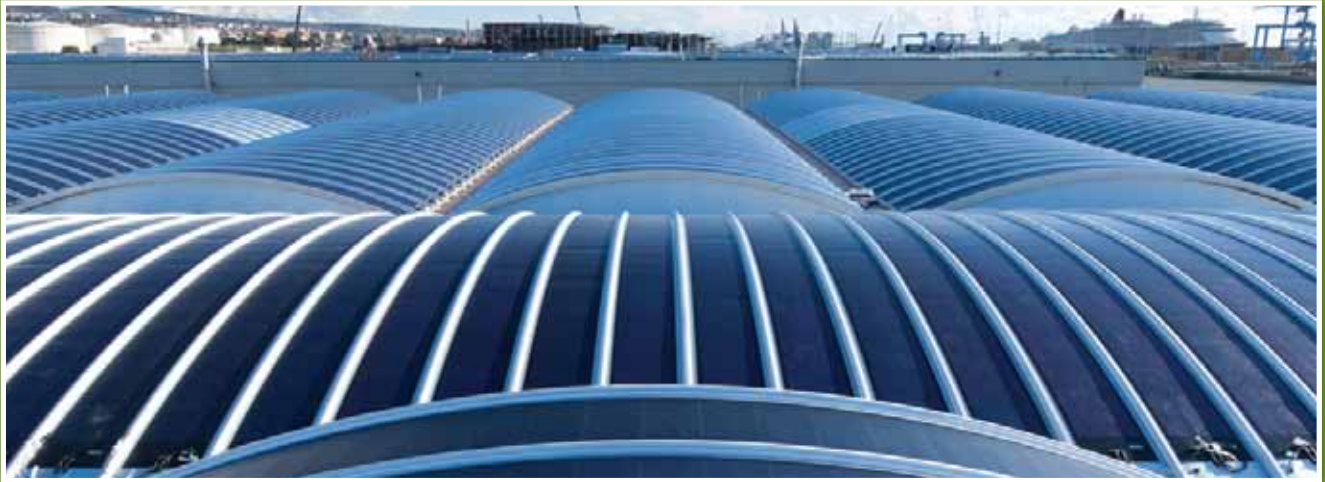


Rated Power: 136 Wp

- EnerGen can be installed without roof penetration.
- EnerGen is lightweight and does not require structural analysis.
- EnerGen is great for low-load roofs and is easily installed by roofers.
- EnerGen can be applied seamlessly with any asphalt shingle.

Offered through CertainTeed

The **UNI-SOLAR®** Difference



Privilege Yard Shipyard | Lazio, Italy | 1.1MW



ProLogis | Portland, OR | 1.1MW



Coca-Cola Plant | Los Angeles, CA | 385 kW



Tessman Road Landfill | San Antonio, TX | 135 kW



GM Opel Plant | Zaragoza, Spain | 12MW



Tesco + Fresh & Easy | Riverside, CA | 2MW



U.S. Army Installation | Oahu, HI | 6MW



Rome Trade Fair | Rome, Italy | 1.4MW

UNI-SOLAR®

Global Contact Information

GLOBAL HEADQUARTERS
Auburn Hills, MI USA
info@uni-solar.com

EUROPEAN HEADQUARTERS
Paris, France
franceinfo@uni-solar.com

GERMAN SALES OFFICE
Mainz
europeinfo@uni-solar.com

ITALIAN SALES OFFICE
Verona
italyinfo@uni-solar.com

To learn more about **UNI-SOLAR** and all of our products, visit us at www.uni-solar.com.